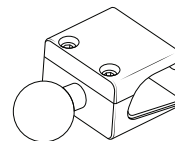


OFFROAD

WARNINGS

- Do not mount accessories in front of or near the path of airbag deployment.
- Check vehicle compatibility before install to avoid damage to the vehicle mount point.
- Designed to work with OEM dashboard only, not compatible with aftermarket modifications.
- Do not use with 3rd party extension arms. Adhere to our phone weight limits.
- Mount electronics away from airflow to prevent heat damage.

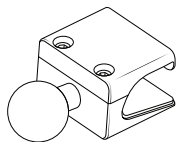
Self-installation instructions and advice are provided for your convenience. It is your responsibility to determine if you have the knowledge, skills, and physical ability required to properly perform an installation. Offroad shall have no liability for damage or injury resulting from the installation or use of any Offroad or third party products. It is your responsibility to ensure that all products are installed in adherence with local laws and regulations and in such a manner as to allow a vehicle to be operated safely and without distraction. Offroad product warranties do not cover the installation, removal or re-installation of any product.



Mounting Base Installation Instructions

Toyota Tacoma 1996-2004

COMPONENTS



Mounting Base

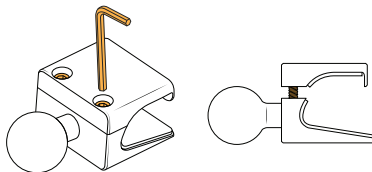


L-key

01

Using the L-key provided, slightly loosen the screws to ensure the inner plate moves.

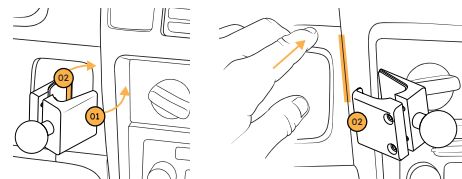
Do not fully remove the screws - keep about one thread engaged.



02

Position the inner mounting base plate in the upper left corner of the center console as shown (01).

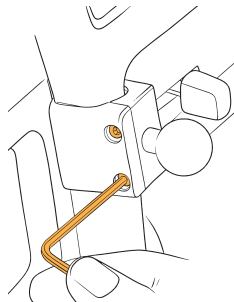
Then position the outer mounting base plate lip (02) into the gap between the centre console and dash - push dash area to open gap.



03

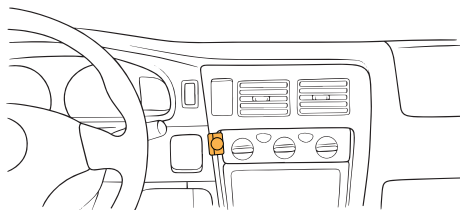
Using the L-key, hand tighten the screws until the mounting base has a snug fit.

To ensure the best fit possible, hold mounting base while tightening.



POSITIONING

Fits the upper corner of the driver side center console as shown.



WATCH THIS INSTALL

