

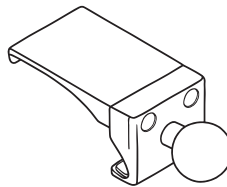
OFFROOM

WARNINGS

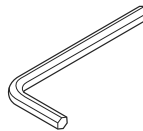
- Do not mount accessories in front of or near the path of airbag deployment.
- Check vehicle compatibility before install to avoid damage to the vehicle mount point.
- Designed to work with OEM dashboard only, not compatible with aftermarket modifications.
- Do not use with 3rd party extension arms. Adhere to our phone weight limits.
- Mount electronics away from airflow to prevent heat damage.

Self-installation instructions and advice are provided for your convenience. It is your responsibility to determine if you have the knowledge, skills, and physical ability required to properly perform an installation. Offroom shall have no liability for damage or injury resulting from the installation or use of any Offroom or third party products. It is your responsibility to ensure that all products are installed in adherence with local laws and regulations and in such a manner as to allow a vehicle to be operated safely and without distraction. Offroom product warranties do not cover the installation, removal or re-installation of any product.

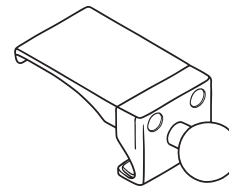
COMPONENTS



Mounting Base



L-key



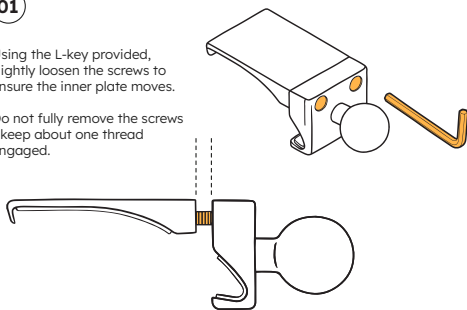
Mounting Base Installation

Toyota FJ Cruiser 2007-2014

01

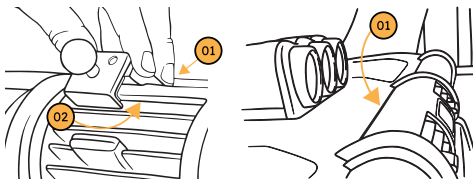
Using the L-key provided, slightly loosen the screws to ensure the inner plate moves.

Do not fully remove the screws - keep about one thread engaged.



02

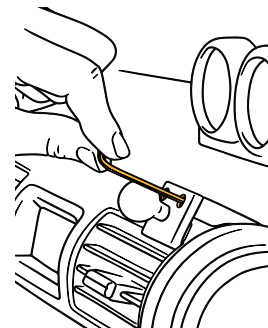
Hook the rear mounting base plate in the seam above the air vents (01) and position the front base plate into the air vent (02).



03

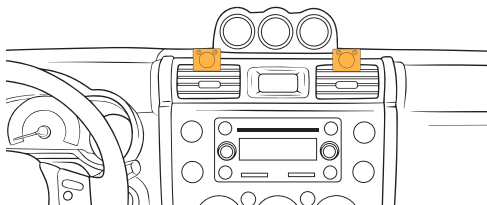
Alternate tightening screws until the mounting base has a snug fit around air vent bezel.

To ensure the best fit hold mounting base with hand while tightening.



POSITIONING

Fits center console air vents on either left or right side.



WATCH THIS INSTALL

