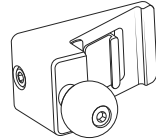
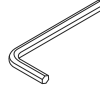
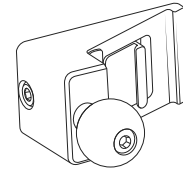


COMPONENTS

Mounting Base



L-key



Mounting Base Installation Instructions

Rivian R1T|R1S 2022-2025

WARNINGS

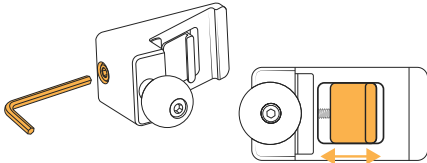
- Do not mount accessories in front of or near the path of airbag deployment.
- Check vehicle compatibility before install to avoid damage to the vehicle mount point.
- Designed to work with OEM dashboard only, not compatible with aftermarket modifications.
- Do not use with 3rd party extension arms. Adhere to our phone weight limits.
- Mount electronics away from airflow to prevent heat damage.

Self-installation instructions and advice are provided for your convenience. It is your responsibility to determine if you have the knowledge, skills, and physical ability required to properly perform an installation. Offroom shall have no liability for damage or injury resulting from the installation or use of any Offroom or third party products. It is your responsibility to ensure that all products are installed in adherence with local laws and regulations and in such a manner as to allow a vehicle to be operated safely and without distraction. Offroom product warranties do not cover the installation, removal or re-installation of any product.

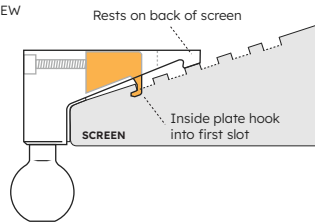
01

Using the L-key provided, slightly loosen the screw to ensure the inside base plate moves freely.

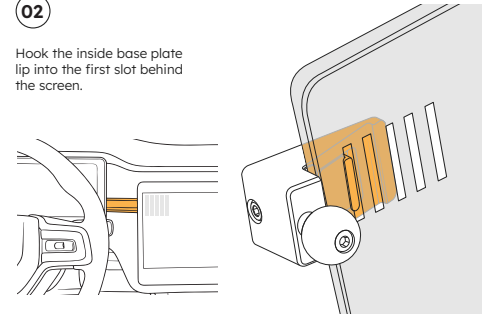
Do not fully remove the screw - keep about one thread engaged.

**NOTE**

TOP VIEW

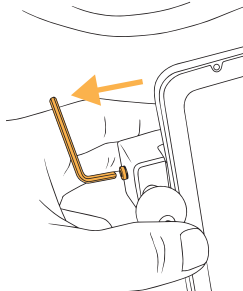
**02**

Hook the inside base plate lip into the first slot behind the screen.

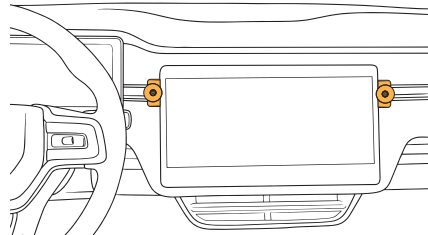
**03**

Keep outward tension on the mount.

Using the L-key, tighten the screw until the mounting base is drawn inward to the touch screen bezel and firmly attached.

**POSITIONING**

Fits on both sides of the touch screen as shown.



WATCH THIS INSTALL

