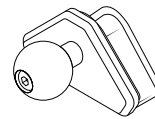


WARNINGS

- Do not mount accessories in front of or near the path of airbag deployment.
- Check vehicle compatibility before install to avoid damage to the vehicle mount point.
- Designed to work with OEM dashboard only, not compatible with aftermarket modifications.
- Do not use with 3rd party extension arms. Adhere to our phone weight limits.
- Mount electronics away from airflow to prevent heat damage.

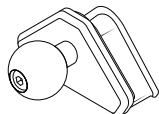
Self-installation instructions and advice are provided for your convenience. It is your responsibility to determine if you have the knowledge, skills, and physical ability required to properly perform an installation. Offroad shall have no liability for damage or injury resulting from the installation or use of any Offroad or third party products. It is your responsibility to ensure that all products are installed in adherence with local laws and regulations and in such a manner as to allow a vehicle to be operated safely and without distraction. Offroad product warranties do not cover the installation, removal or re-installation of any product.



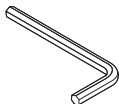
Mounting Base Installation Instructions

RAM 1500|2500|3500 2019-2025
(Console shifter interiors)

COMPONENTS



Mounting Base

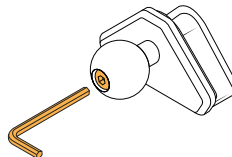


L-key

01

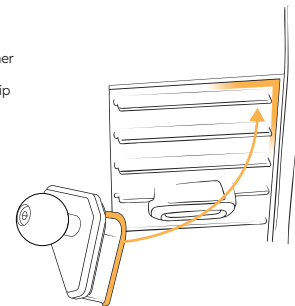
Using the L-key, loosen the clamping screw to open the mounting base.

Do not fully remove the screw - keep at least one thread engaged.



02

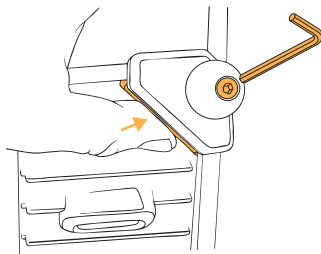
Position mounting base plate rear lip into the corner of air vent as shown, engaging the base plate lip fully into the thin gap behind the air vent bezel.



03

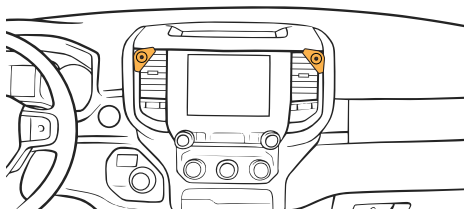
Using the L-key, hand tighten the screw until the mounting base has a snug fit.

Hold the base in position by firmly pushing it into the corner while tightening.



POSITIONING

Fits the upper outer corners of the center console air vents as shown.



WATCH THIS INSTALL

