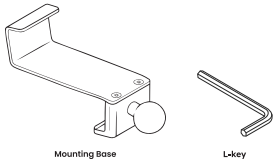


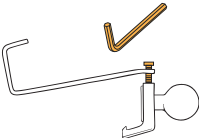
COMPONENTS



01

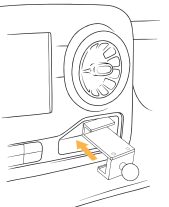
Open the mounting base by loosening the two screws on the top.

Do not fully remove the screws - keep a few threads engaged.



02

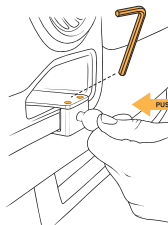
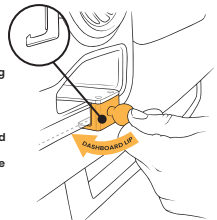
Slide mounting base fully into the larger portion of the driver or passenger side dash pocket.



03

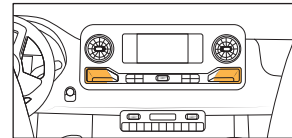
Alternate tightening screws until mounting base has a snug fit around dash.

For secure fitment, push clamp with hand while tightening to ensure the lower plate of the base catches the dashboard lip.



POSITIONING

Designed to only fit within larger portion of the OEM dash pockets (shown below).



OFFROAM

Watch This Install

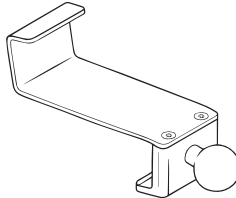


SUPPORT
hello@getoffroam.com
415 - 592 - 7626

WARNINGS

- Do not mount accessories in front of or near the path of airbag deployment.
- Check vehicle compatibility before install to avoid damage to vehicle mount point.
- Designed to work with OEM dashboard only, not compatible with aftermarket modifications.
- Do not mount heavy devices and/or use with long extension arms. Check the rated weight limit.
- Mount electronics away from air flow to prevent heat damage.

Self-installation instructions and advice are provided for your convenience. It is your responsibility to determine if you have the knowledge, skills, and physical ability required to properly perform an installation. Offroam shall have no liability for damage or injury resulting from the installation or use of any Offroam or third party products. It is your responsibility to ensure that all products are installed in adherence with local laws and regulations and in such a manner as to allow a vehicle to be operated safely and without distraction. Offroam product warranties do not cover the installation, removal or re-installation of any product.



Mounting Base Installation Instructions

Mercedes-Benz Sprinter 2019-2024